

Drives and Racks



Adapter
(6915)



BGT+BKT bolt and nut
(7146)



BKT drive unit
(7128)



BKT fixing angle
(7126)



BKT Rack (hollow)
(7100)



Cable safety chain
(6912)



Cable safety chain
(6911)



Cable safety chain
(6910)



Chain coupling SET
(6090/ 6091/ 6093)



Coupling piece
(7201/ 7202)



Grease for racks
(7991)



GW-Mounting plate
(6505/ 6506)



GW10 Drive
(6520/ 6525)



GW30 Drive
(6530/ 6535)



GW40 Drive
(6540/ 6545)



GXP Drive
(6705)



Lock EWA 10 0505
(6101)



Lock EWA 10 0905
(6115)



Lock EWA 12 1505
(6130)



Lock EWA 12 2505
(6135)



Lock EWA 14 3505
(6145)



Lock EWA 14 4505
(6155)



Lock EWA 14 6003
(6163-6)



Lock EWA 16 9003
(6175-6)



LOCK SZG rack housing unit
(7200-LOCK)



Motor plate
(6173)



Motor plate for side support
(6172)



Nut coupling 1"
(6089)



Nut coupling 1"
(6088/ 6089)



Pinion 1"
(7129)



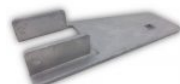
Set of mounting bracket
(3457)



Set THG Fixing angle
(7516/ 7517)



Shaft clip
(7203)



Support 50x50mm
(6916)



Support plate 1", angled
(7910)



Support plate 1", straight
(7920)

□ **THG THG Screw M6**
(7517)

□ **THG ventilation rack**
(7500-165)



THG ventilation rack, bent
(7501)



THG ventilation rack, straight
(7500)



THG30 Pinion house unit
(7518)



THG30 rack
(7230/ 7240)



THG30/40 1:1 Housing
(7205)



THG40 Rack
(7240)



THG40 rack housing unit
(7200)



Tubular motor Nova 50
(6965)



Tubular Motor RMA
(6261/ 6265)



Welding joint 1-5/4"
(7210)



Welding joint 1"
(7209)



Winch
(6990/ 6992)

HS² Weather Protection



APS DUO HD Profile
(3625)



APS Duo support profile
(3624)



APS2 screen profile
(3636)



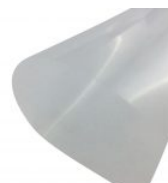
Coupling piece for screen profile
(3689/ 3690)



Covering plate for HS² Multiclip
(3604)



Hexagonal drilling screw
(8625/ 8630)



HS maxilux 200 ANTIFIRE
(2627)



HS² dripdrain profile
(3627)



HS² isolating rubber
(3570)



HS² Multiclip OUTDOOR SET
(3688)



HS² Multiclip set INDOOR
(3688-IN)



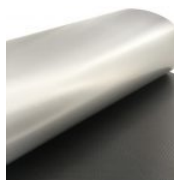
HS² support bracket for truss
(3686)



HS² truss covering profile
(3717)



HS²-angle
(3475)



HSX ANTIFIRE series
(2613/ 2618)



Insert for HS² Multiclip set indoor
(3679)



KederPLUS Profile
(3639)



Screen profile APS QUATTRO
(3620/ 3620-2)



SHS WOVEN CLEAR series



SHS WOVEN CLEAR series (Kopie)



Wire tensioner with flat front edge

(4981/ 4984)

Other accessories



Air heater (with warm water)
(8822)



Blade for heat-cutter
(8312 / 8313)



Bushing joint, separable
(4425)



Cartridge gun
(2295)



Fixing elements, round
(2299)



Heat-cutter
(8310)



Hexagonal drilling screw
(8625/ 8630)



LED power supply unit
(8569)



LED Strip, cold white
(8560)



Silicone glue
(2290)



Snap hook
(4420/ 4421)



Stapler, heavy-duty
(8410)



Staples, stainless steel
(8415)



Strip brush
(8100/ 8199)



Tensioning device
(4980)



Wire scissors
(8330)

Rolling screen systems



Cable chain bracket
(3223)



Connector for Ø100mm roll up tubes
(3265-20)



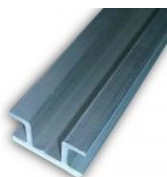
Connector for round shaft on Double DUO ULTRA
(3272)



End piece for roll up tube, ball bearing mounted
(3291)



Fixed-back channel rail
(3630)



Guide bar, different lengths
(3220)



Profile shaft Ø175mm
(3275)



Purlin clip for roll screen
(3216)



Roll screen slider, stainless steel
(3221)



Roll up tube, double groove
(3252/ 3261)



Rolling screen guide
(3228/ 3231)



Tube connector
(3257/ 3266)



Tube for rolling system "Double Duo"
(3269/ 3670)

Technical parts



Aluminium clamp
(3727/ 3732)



Awing pulley
(5241/ 5242)



Awing pulley Ø52mm
(5215)



Awing pulley PRO for Ultrafix-plate
(5233)



Awing pulley with bracket, different types
(5224/ 5225/ 5225-AS/ 5232/ 5235)



Awing pulley with special plastic bracket
(5240)



Awing pulley without bracket
(5220/ 5221/ 5230-2/ 5231)



Ball bearing for bearing plate
(5281-1)



Ball bearing with fixing screw
(5279)



Ball bearing without fixing screw
(5278)



Bearing 1", plastic
(5270)



Bearing housing
(5276)



Bearing housing SET
(5276+5278/ 5276+5279)



Bearing plate, round
(5272/ 5273/ 5274/ 5274-42)



Bearing plate, square
(5281/ 5282/ 5283/ 5285)



Bracket 50x50m, stainless steel
(4820)



Bracket for awing pulley
(5232-1/ 5235-1)



Bushing joint, separable
(4425)



Cable drum 1"
(5200/ 5200-15/ 5202/ 5203)



Cable drum 2"
(5209)



Cable drum 2" separable
(5207)



Cable drum with hose clamp
(5204)



Cable drum, special 1,5"
(5200-15)



Cable fixing clamp
(4988/ 4989)



Cardan shaft
(5260-0/ 5261/ 5265/ 5266)



Clamp
(3010)



Clamp, stainless steel
(5415)



Clamping block, different types
(5600/ 5601)



Clip for tube
(5117/ 5119)



Cloth peg
(5400/ 5405)



Compact wire tensioner
(4810)



Coupling piece for wire driven systems
(5605)



Cross-type clamp, small
(5516)



Delay element, plastic
(5510/ 5511)



Delay elements
(5520/ 5530/ 5532/ 5540)



Diabolo wheel M6 with aluminium support
(3480)



Diabolo wheel with bracket
(3485)



Diabolo wheel, plastic
(5210/ 5212/ 5213)



Double awing pulley
(5297)



Glide-off tin plate
(5289)



Hammerhead bolt M6, stainless steel
(3025)



Hammerhead bolt, galvanised
(3015-25/ 3015-30)



Hammerhead bolt, galvanised
(3014/ 3015)



Hanging plate (with holes)
(3520)



Hose clamp, metal
(5518/ 5519)



HS² support bracket for truss
(3686)



Maxi-wire tensioner
(4998/ 4999)



MD Clip
(5140)



Nut M6
(3016)



Nut M6, stainless steel
(3026)



Outdoor hook
(5006)



Plastic roll
(5211)



Return pulley with supporting beam
(5295/ 5295-30)



S-Hook (screen hook), plastic
(5000/ 5001-1/ 5001-2)



S-Hook galvanised
(5003)



Screen clip with wire support
(5300)



Screen folder, different types
(5010/ 5131/ 5135/ 5136)



Screen guide, stainless steel
(5010)



Screen hook with lateral closure
(5009)



Screen hook, egg shape
(5120)



Sealing bracket, plastic
(5253)



Set of weights for cloth
(5495)



Sliding clamp, large
(5517)



Sliding clutch
(5550/ 5555)



Snap hook
(4420/ 4421)



Support element
(5355)



Supporting beam with pulley
(5291/ 5292)



Suspension clamp
(5718/ 5719)



Suspension holder, plastic
(5335)



Swivel pulley
(5243/ 5244/ 5245/ 5246/ 5247)



Table clamp
(3591/ 3626/ 3628)



Triple hook (SET of three pieces)
(5151)



Truss clip, stainless steel
(5020- 5060)



Tube clamp for tube 50x50mm
(4815/ 4818)



Tube clamp, plastic, different types
(5320/ 5331/ 5332/ 5333/ 5334)



Tube holder, aluminium
(3827/ 3832)



Two half-shells, plastic
(5209-1)



Victor chain
(4006)



Vierkantstopfen für Tische
(5390)



Wire guide for profile, plastic
(3697)



Wire guide for profile, stainless
steel
(3695)



Wire guide, plastic
(3694)



Wire guide, stainless steel
(3691/ 3692)



Wire tensioner
(4991/ 4992)



Wire tensioner with twin mounting
(4982)

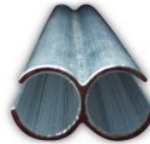
Tubes and Profiles



Aluminium clamp
(3727/ 3732)



Aluminium tube
(3119)



APS connect AL-profile
(3623)



APS DUO HD Profile
(3625)



APS DUO neo profile
(3641)



APS Duo support profile
(3624)



APS2 screen profile
(3636)



Bearing 1", plastic
(5270)



Black sealing rubber for screen profile
(3698/ 3699)



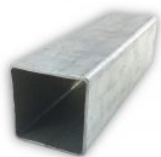
Clamp
(3010)



Clamping plate with long holes
(3469)



Connecting bolt and nut
(3001/ 3002)



Connector for square tube (art. 3450)
(3451)



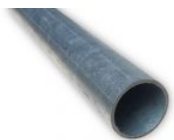
Coupling piece for screen profile
(3689/ 3690)



Diabolo wheel, plastic
(5210/ 5212/ 5213)



Drive shaft (galvanised tube 2")
(3047/ 3048)



Drive shaft tube (galvanised)
(3045/ 3046)



Elbow joint for square tube
(3449)



Fixed-back channel rail
(3630)



Hammerhead bolt, galvanised
(3014/ 3015)



HS² isolating rubber
(3570)



HS² truss covering profile
(3717)



Janus Profile
(3619)



Joint connector, different types
(3190/ 3192/ 3195)



KederPLUS Profile
(3639)



Maxi clamp set with long holes
(3470)



Omega SET
(3452)



Pipe wrap connector for 1" tube
(3445)



Rigid connector
(3199)



Round tube, galvanized
(3019/ 3027/ 3032)



Rubber stopper for Ø19mm tube
(3294)



Screen profile APS QUATTRO
(3620/ 3620-2)



Screw for support bracket (art. 3685)
(3685-1)



Sigma-Profile
(3650)



Square tube 50x 50x 2mm
(3450)



Suspension bracket for APS2 and APS DUO profiles
(3685)



Table clamp
(3591/ 3626/ 3628)



Tube holder, aluminium
(3827/ 3832)



Tube joint
(3191)



Wire guide for profile, plastic
(3697)



Wire guide for profile, stainless steel
(3695)



Wire guide, plastic
(3694)



Wire guide, stainless steel
(3691/ 3692)

Wires & Cables



Atlas wire, transparent
(4030/ 4033)



Bracket 50x50m, stainless steel
(4820)



Bushing joint, separable
(4425)



Cable clamp
(4401/ 4402)



Cable clamp, oval
(4412/ 4413/ 4414)



Cable drum 1"
(5200/ 5200-15/ 5202/ 5203)



Cable drum 2"
(5209)



Cable drum 2" separable
(5207)



Cable drum with hose clamp
(5204)



Cable drum, special 1,5"
(5200-15)



Cable fixing clamp
(4988/ 4989)



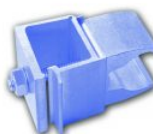
Cable pulley with clamp
(4990)



Clamping block, different types
(5600/ 5601)



Compact wire tensioner
(4810)



Coupling piece for wire driven systems
(5605)



Double awing pulley
(5297)



Glide-off tin plate
(5289)



Maxi-wire tensioner
(4998/ 4999)



Plastic roll
(5211)



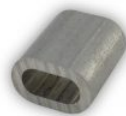
Polyester rope
(4012/ 4013)



Polyester rope, 4mm
(4014)



Polyester wire
(4040/4041)



Press slide, oval
(4503/ 4513)



Return pulley with supporting beam
(5295/ 5295-30)



Solid stainless steel wire
(4020)



Special wire, PP-coated
(4070)



Stretching wire holder, open
(4814)



Supporting beam with pulley
(5291/ 5292)



Tensioning device
(4980)



Tube clamp for tube 50x50mm
(4815/ 4818)



Two half-shells, plastic
(5209-1)



Victor chain
(4006)



Wire guide, stainless steel
(3691/ 3692)



Wire scissors
(8330)



Wire tensioner
(4991/ 4992)



Wire tensioner with flat front edge
(4981/ 4984)



Wire tensioner with twin mounting
(4982)



Wire, stainless steel
(4020/ 4023/ 4024)



Wire, stainless steel
(4080/ 4081)



Wire, stainless steel
(4056/ 4080/ 4081)