

Horticulture	2
HS ² Weather Protection	2
Shading screens	6
Shading & Energy saving	8
Films	11
Blackout	12
System parts	14
Drives and Racks	14
Wires & Cables	21
Rolling screen systems	27
Technical parts	29
Tubes and Profiles	40
Other accessories	45
Horticulture Supplies	47
LED lighting	47
Deko & Events	48

HORTICULTURE

HS² WEATHER PROTECTION

Retractable Roof Systems



HS²-DIABOLO WHEEL SET (3495)

SKU:3495

Diabolowheel SET for truss-covering profile

made of:

- Aluminium bracket 80x40x3mm x 90mm
- Hammerhead bolt M6x16 / stainless steel
- Diabolo wheel, small, M6 for Ø32mm tube
- Screw M6x75mm (Aussensechskant) / stainless steel
- Nut M6 stainless steel



APS DUO HD PROFILE (3625)

SKU:3625

in aluminium
6.4m long



HEXAGONAL DRILLING SCREW (8625/ 8630)

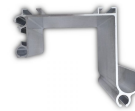
SKU:8625/ 8630

Variations

Type

with flange 4,2x 25mm for HS²-support bracket (Art. 3686)

with flange 6,3x 19mm



HS² TRUSS COVERING PROFILE (3717)

SKU:3717

in Aluminium
Length: 6.40m
Width: 80mm



COUPLING PIECE FOR SCREEN PROFILE (3689/ 3690)

SKU:3689/ 3690



HS² MULTICLIP OUTDOOR SET (3688)

SKU:3688

consisting of:
- HS²-Multiclip bracket single

Variations

Type

in AL, straight

in AL, bent



HS² MULTICLIP SET INDOOR (3688-IN)

SKU:3688-IN

consisting of:

- HS²-Multiclip bracket single
- Plastic insert



HS² SUPPORT BRACKET FOR TRUSS (3686)

SKU:3686

in plastic, single piece, without self-drilling screw (art. 8630)



INSERT FOR HS² MULTICLIP SET INDOOR (3679)

SKU:3679

in plastic



HS² DRIPDRAIN PROFILE (3627)

SKU:3627

Aluminium/ 6.4m



KEDERPLUS PROFILE (3639)

SKU:3639

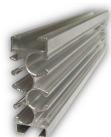
Aluminium/ 6.40m



APS2 SCREEN PROFILE (3636)

SKU:3636

Aluminium/ 6.4m



SCREEN PROFILE APS QUATTRO (3620/ 3620-2)

SKU:3620/ 3620-2

Length: 6.4m



APS DUO SUPPORT PROFILE (3624)

SKU:3624

in aluminium
6.4m long

Variations

Type

in aluminium

in plastic



COVERING PLATE FOR HS² MULTICLIP (3604)

SKU:3604

in Aluminium (fits to plastics support)



HS²-ANGLE (3475)

SKU:3475

for wire fixation
50x50x5mm, galvanised



HS MAXILUX 200 ANTIFIRE (2627)

SKU:2627

Highly transparent film for architectural application
Material: 100% ETFE (Ethylene tetrafluoroethylene)
Flame retardancy: in conformity with DIN4201-B1 / DIN EN 13 501-1 (Bs1d0)
Thickness: 0.20mm
Weight: ca.360 g/m²
Standard width: 2.0m



HS² ISOLATING RUBBER (3570)

SKU:3570

für profile joints (art. 3624-3625)



HSX ANTIFIRE SERIES (2613/ 2618)

SKU:2613/ 2618

Film for weather protection (HS² installation), side or roof roll up
Material: base 100% polyester/ coating PVC
Flame retardancy: in conformity with DIN EN 13501-1 (Bs2,d0)
Standard width: 3.0m

Variations

Type

HSX 650 ANTIFIRE A+B

HSX 700 ANTIFIRE WHITE



SHS WOVEN WHITE SERIES (1399 / 1386)

SKU:1399 / 1386

PE film woven strips
Double-sided waterproof coated
Standard width: 3,66m

Variations

Typ

SHS Woven White HD B3

SHS Woven White 180 ANTIFIRE



SHS WOVEN CLEAR SERIES (N/A)

SKU:N/A

PE film strips
Double-sided waterproof coated
Standard width: 3,66m



WIRE TENSIONER WITH FLAT FRONT EDGE (4981/ 4984)

SKU:4981/ 4984

Variations

Variations

Type	Type
SHS Woven Clear HD	1.8-3.0mm / max 400 kg
SHS Woven Clear 400	3.0-4.2mm / max 600kg
SHS Woven Clear 180 ANTIFIRE	

SHADING SCREENS



SHADING MAT, DIFFERENT TYPES AVAILABLE (N/A)

SKU:N/A

Variations

Type
50% Shading
70% Shading



IHS OPEN ANTIFIRE SERIES (1766/ 1868/ 1754)

SKU:1766/ 1868/ 1754

Polyester filament yarn/ HDPE-Film strips (different colours available)
Fire retardant in compliance with DIN4102-B1
Standard width: 4.30/ 4.75m

Variations

Type
IHS 107 OPEN ANTIFIRE (3x white/ 1x open)
IHS 167 OPEN ANTIFIRE (3x green/ 1x open)
IHS 105 OPEN ANTIFIRE (1x white/ 1x open)



WHS PRO OPEN SERIES (N/A)

SKU:N/A

Polyester filament yarn/ HDPE-stripes



OHS ANTIFIRE SERIES (N/A)

SKU:N/A

OHS Nets of HDPE film strips (in several colours)

Variations

Type
OHS 116 ANTIFIRE (white)
OHS 136 ANTIFIRE (green)
OHS 156 ANTIFIRE (grey)
OHS 176 ANTIFIRE (black)



IHS 107 OPEN ANTIFIRE (1766)

SKU:1766

Polyester filament yarn/ HDPE-stripes (white-open)
flame retardant according to DIN4102-B1
Standard width: 4.75m
Weight: ca. 200g/m²
Shading: ca. 53-55%



WHS 117 PRO OPEN ANTIFIRE (1202)

SKU:1202

Polyester filament yarn/ HDPE stripes

(white-open) flame retardant according to DIN4102-B1

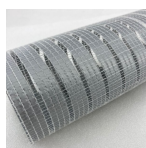
Variations

Type

WHS 115 PRO OPEN ANTIFIRE (white-open 1:1)

WHS 117 PRO OPEN ANTIFIRE (white-open 3:1)

WHS 113 PRO OPEN ANTIFIRE (white-transparent-open)



GHS 117 OPEN PRO ANTIFIRE (N/A)

SKU:N/A

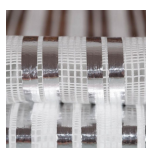
Knitted Polyester yarn/ HDPE film (grey)
Flame retardant

Variations

Type

GHS 115 OPEN PRO ANTIFIRE (grey-transparent 1:1)

GHS 117 OPEN PRO ANTIFIRE (grey-transparent 3:1)



HS 895 OPEN B3 (9895)

SKU:9895

Acrylic knitted fabrics with AL-PET-bond
non-flame retardant
Standard width: 4.30m
Weight: 120g/m²
Shading value: ca. 50%
Energy saving: ca. 30%

(white-open)
Fire retardant according to DIN4102-B1
monitored product
Standard width: 4.75m
Weight: 90g/m²
Shading: ca. 55%



SHS OUTDOOR 60 B3 (1660)

SKU:1660

PE / Aluminium compound foil (white-silver grey)
Non flame retardant
Standard width: 4.30m
Weight: 135g/m²
Shading: ca. 65%
Energy saving: ca. 17-20%

SHADING & ENERGY SAVING



SHS 160 B3 (1776)

SKU:1776

Knitted material in PES und AL stripes,
PET-yarn
Non flame retardant
Standard width: 4.30m
Weight: ca. 90g/m²
Shading: ca. 60-63%
Energy saving: ca. 55%



SHS 150 B3 (1775)

SKU:1775

Knitted material in PES and AL-stripes,
PET yarn
Non-flame retardant
Standard width: 4.30m
Weight: ca. 76g/m²
Shading: ca. 50-52%
Energy saving: ca. 50-55%



HS TREVIRA CS ANTIFIRE SERIES (1110/ 1124/ 1125)

SKU:1110/ 1124/ 1125

Woven screen made of 100% PES
Fire retardant
Standard width: 3.50m for white /
2,15m for colour
Weight: ca. 150g/m²
Shading level: white ca. 52% / in colour
ca. 65%
Energy saving: ca. 50-55%



HS MODACRYLICS SERIES (1150 / 1151)

SKU:1150 / 1151

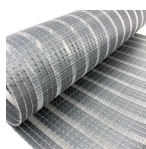
Woven screen of modified acrylics
(modacrylics)
Fire retardant
Standard width: 3.50m / 4.30m
Weight: ca. 148g/m²
Shading level: white ca. 55% / in colour
ca. 65%
Energy saving: ca. 50-55%

Variations

Type
white
FLEXA, terracotta-white, thin stripes
FLEXA, terracotta-white, wide stripes

Variations

Type
white
grey-white 2:2



GHS 117 PRO ANTIFIRE (1249)

SKU:1249

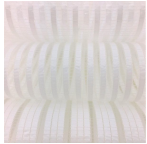
Knitted Polyester yarn/ HDPE film
(silver-grey)
Flame retardant
Standard width: 4.30m
Weight: 110g/m²
Shading value: ca. 70%



HS TREVIRA ANTIFIRE (1110/ 1124/ 1125)

SKU:1110/ 1124/ 1125

Woven screen 100% Polyester
Standard width: white 3.50m / in colour
2.15m
Weight: ca. 150g/m²
Shading: white ca. 52% / in colour ca.
65%
Energy saving: ca. 50-55%



WHS PRO ANTIFIRE SERIES (1218/ 1205)

SKU:1218/ 1205

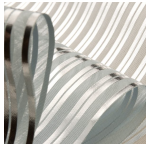
Polyester filament yarn/ HDPE-stripes (white-transparent)
flame retardant according to DIN4102-B1

Variations

Type

WHS 117 PRO ANTIFIRE (white-transparent 3:1)

WHS 113 PRO ANTIFIRE (transparent-white 3:1)



HS 88X B3 SERIES (N/A)

SKU:N/A

Material: Acrylics with Aluminium stripes thermally applied on it
Flame retardancy: none
Standard width: 3.50m/ 4.30m

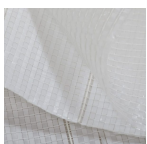
Variations

Type

HS 880 B3 (white/ 1 AL-stripe)

HS 885 B3 (white/ 2 AL-stripes)

HS 887 B3 (white/ 3 AL-stripes)



SHS WHITE THERM ANTIFIRE (1251)

SKU:1251

Material: HDPE / Modacrylics with woven reinforcement strips every 20cm



SHS 15 PRO ANTIFIRE (1717)

SKU:1717

Trasparent energy saving screen in HDPE-stripes und Polyester filament yarn
Flame retardant in conformity with DIN 4102-B1
Standard width: 4.30m
Weight: 100g/m²
Shading: ca. 15%
Achievable energy saving: ca. 46%



SHS CLEAR THERM ANTIFIRE (1256)

SKU:1256

Material: HDPE / Modacrylics with woven reinforcement strips every 20cm
Double layer screen: transparent film (upper und bottom layer)
Fire retardant: in conformity with DIN 4102-B1
Standard width: 4,30m
Weight: 150g/m²
Shading: ca. 36%
Energy saving: ca. 65-70%



SHS SHADE THERM ANTIFIRE (1255)

SKU:1255

Material: HDPE / Modacrylics with woven reinforcement strips every 20cm

Variations

Type

white, standard width: 3,55m

FLEXA thin stripes (terracotta-white) / standard width: 2,15m

FLEXA large stripes (terracotta-white) / standard width: 2.15m

Double layer screen: Upper layer white film / Bottom layer transparent film
 Fire retardant: in conformity with NTA 8825:2018 (B-s2, d0)
 Standard width: 4,30m
 Weight: 170g/m²
 Shading: ca. 65%
 Energy saving: ca. 70%

Double layer screen: Upper layer gray film / Bottom layer transparent film
 Fire retardant: in conformity with DIN EN 13501-1 (B-s1, d0)
 Standard width: 4,30m
 Weight: 170g/m²
 Shading: ca. 65%
 Achievable energy saving: ca. 70%



IHS ANTIFIRE SERIES (1767/ 1751/ 1851/ 1866)

SKU:1767/ 1751/ 1851/ 1866

Polyesterfilament yarn/ HDPE film strips
 (different colours)
 Fire retardant in compliance with
 DIN4102-B1 (monitored product)
 Standard width: 4.75m
 Weight: ca. 200g/m²

Variations

Type

IHS 108 ANTIFIRE grey-black-grey-transparent

IHS 100 ANTIFIRE white

IHS 150 ANTIFIRE (IT) white-green-white-red

IHS 165 ANTIFIRE green-white-green-white

FILMS



HSX ANTIFIRE SERIES (2613/ 2618)

SKU:2613/ 2618

Film for weather protection (HS² installation), side or roof roll up
Material: base 100% polyester/ coating PVC
Flame retardancy: in conformity with DIN EN 13501-1 (Bs2,d0)
Standard width: 3.0m

Variations

Type

HSX 650 ANTIFIRE A+B

HSX 700 ANTIFIRE WHITE



SHS WOVEN WHITE SERIES (1399 / 1386)

SKU:1399 / 1386

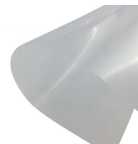
PE film woven strips
Double-sided waterproof coated
Standard width: 3,66m

Variations

Typ

SHS Woven White HD B3

SHS Woven White 180 ANTIFIRE



HS MAXILUX 200 ANTIFIRE (2627)

SKU:2627

Highly transparent film for architectural application
Material: 100% ETFE (Ethylene tetrafluoroethylene)
Flame retardancy: in conformity with DIN4201-B1 / DIN EN 13 501-1 (Bs1d0)
Thickness: 0.20mm
Weight: ca.360 g/m²
Standard width: 2.0m



SHS WOVEN CLEAR SERIES (N/A)

SKU:N/A

PE film strips
Double-sided waterproof coated
Standard width: 3,66m

Variations

Type

SHS Woven Clear HD

SHS Woven Clear 400

SHS Woven Clear 180 ANTIFIRE

BLACKOUT



BHS 100 ANTIFIRE (1220)

SKU:1220

Material: Woven HDPE, black
 Fire retardant
 Weight: ca. 80g/m²
 Darkening level: ca. 95%
 Standard width: 4,75m
 for higher darkness it is recommended
 a double-layer installation



BHS 1 ANTIFIRE (1790)

SKU:1790



HS 1000 SERIES (N/A)

SKU:N/A

Knitted darkening screen for horizontal,
 HS² installation and side or roof roll up
 Material: 100% polyester, black
 Standard width: 2.08m
 Darkening level: ca. 100%



BHS99 B/W ANTIFIRE (1229)

SKU:1229

Horizontal darkening screen (top black -
 bottom white)
 100% HDPE
 Standard width: 4.70m
 Flame retardant: in conformity with NTA
 8825 (Class 1)
 Weight: 103g/m²
 Darkening: ca. 98-99% (a double layer
 installation is recommended)
 Achievable energy saving: ca. 52%

Variations

Type

HS 1000 B3

HS 1000 ANTIFIRE - Flame retardant: in
 conformity with DIN EN 13501-1 (Bs2,d0)



HSX ANTIFIRE SERIES (2613/ 2618)

SKU:2613/ 2618

Film for weather protection (HS²
 installation), side or roof roll up
 Material: base 100% polyester/ coating
 PVC
 Flame retardancy: in conformity with
 DIN EN 13501-1 (Bs2,d0)
 Standard width: 3.0m

Variations

Type

HSX 650 ANTIFIRE A+B

Type

HSX 700 ANTIFIRE WHITE

SYSTEM PARTS

DRIVES AND RACKS



THG VENTILATION RACK, BENT (7501)

SKU:7501

Variations

Type



GREASE FOR RACKS (7991)

SKU:7991

Bucket of 5Kg



SUPPORT PLATE 1", STRAIGHT (7920)

SKU:7920

Variations

Type

90mm long, complete

100mm long, complete



SUPPORT PLATE 1", ANGLED (7910)

SKU:7910

Variations

7910

H 125mm complete

H 135mm complete

H 70mm complete

H 90mm complete



THG VENTILATION RACK (7500-165)

SKU:7500-165

straight, without fixing angle

Variations

7500

1,25m

1,45m



SET THG FIXING ANGLE (7516/ 7517)

SKU:7516/ 7517

It includes a THG screw M6

7500

1,65m

2.15m



THG30 PINION HOUSE UNIT (7518)

SKU:7518

for ventilation steel racks



THG SCREW M6 (7517)

SKU:7517



THG VENTILATION RACK, STRAIGHT (7500)

SKU:7500

without fixing angle



THG30 RACK (7230/ 7240)

SKU:7230/ 7240

Variations

Type

1,05m

1,25m

1,45m

1,65m

Variations

TYP

THG 30, L 4467mm / H 30mm hoch

THG 40, 40mm hoch



THG40 RACK (7240)

SKU:7240



WELDING JOINT 1-5/4" (7210)

SKU:7210

Variations

7240

Any 7240

Any 7240

Any 7240

Any 7240

Any 7240

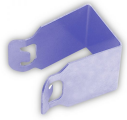
Any 7240

Variations

Type

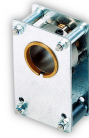
Welding joint 1-5/4"

LOCK welding joint 1-5/4"



SHAFT CLIP (7203)

SKU:7203



THG30/40 1:1 HOUSING (7205)

SKU:7205

rectangular



WELDING JOINT 1" (7209)

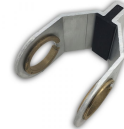
SKU:7209

Variations

7209

Welding joint 1"

LOCK Welding joint 1"



BKT DRIVE UNIT (7128)

SKU:7128

1" without pinion



PINION 1" (7129)

SKU:7129

for BGT und BKT



BGT+BKT BOLT AND NUT (7146)

SKU:7146

for fixing angle art. 7126



THG40 RACK HOUSING UNIT (7200)

SKU:7200



LOCK SZG RACK HOUSING UNIT (7200-LOCK)

SKU:7200-LOCK



COUPLING PIECE (7201/7202)

SKU:7201/ 7202

Variations

Typ

Coupling piece for rack - tube Ø27mm

Coupling piece for rack - tube Ø32mm



TUBULAR MOTOR NOVA 50 (6965)

SKU:6965

50Nm

No warranty granted in case of chain break if tubular motor is used without 90 degrees angle guide rail art. 3223 and chain protection for rolling system art. 6911.

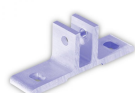


WINCH (6990/ 6992)

SKU:6990/ 6992

Variations

Type
Aluminium cast, transmission 7:1
Aluminium cast, transmission 15:1



BKT FIXING ANGLE (7126)

SKU:7126



BKT RACK (HOLLOW) (7100)

SKU:7100

1.65m straight



CABLE SAFETY CHAIN (6912)

SKU:6912

End clip



ADAPTER (6915)

SKU:6915

for roll up motor



SUPPORT 50X50MM (6916)

SKU:6916

for tubular motor



CABLE SAFETY CHAIN (6911)

SKU:6911

Segment approx. 100cm



GW30 DRIVE (6530/ 6535)

SKU:6530/ 6535

Variations

Type
400.26K100 0.26 kW
400.52K100 0,37 kW



GW40 DRIVE (6540/ 6545)

SKU:6540/ 6545

Variations

Type
400.26K100 0,37 kW
400.52K100 0,37 kW



GXP DRIVE (6705)

SKU:6705

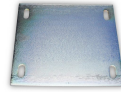
Motor for roll up system 400V



CABLE SAFETY CHAIN (6910)

SKU:6910

Start clip



MOTOR PLATE (6173)

SKU:6173

220x 250x 8mm



TUBULAR MOTOR RMA (6261/ 6265)

SKU:6261/ 6265

Variations

Type
20.0512 50Nm / 12rpm
20.1212 120Nm / 11rpm



GW-MOUNTING PLATE (6505/ 6506)

SKU:6505/ 6506

Variations

Typ
under truss mounting
MP.GW.R.A163



LOCK EWA 16 9003 (6175-6)

SKU:6175-6

900Nm/ 2.4 rpm hexagonal shaft



GW10 DRIVE (6520/ 6525)

SKU:6520/ 6525

400.26K100 0.09 kW

Variations

Typ
400.26K100 0.09 kW
400.52K100 0,18 kW



MOTOR PLATE FOR SIDE SUPPORT (6172)

SKU:6172



LOCK EWA 14 3505 (6145)

SKU:6145

Variations

Type
350Nm/ 4,4 rpm round shaft
350Nm/ 4,4 rpm hexagonal shaft 400V



LOCK EWA 14 6003 (6163-6)

SKU:6163-6

600Nm/ 3.2 rpm hexagonal shaft



LOCK EWA 14 4505 (6155)

SKU:6155



LOCK EWA 10 0505 (6101)

SKU:6101

Variations

Type

50Nm/ 5.6 rpm 400V We06 400V 50Hz E20

50Nm/ 5.6 rpm We06 400V 50Hz E20 A60

50Nm/ 5.9 rpm round shaft 230V



LOCK EWA 10 0905 (6115)

SKU:6115

Variations

Type

90Nm/ 5,6 rpm round shaft

90Nm/ 5,6 rpm hexagonal shaft



LOCK EWA 12 2505 (6135)

SKU:6135

Variations

Type

250Nm/ 4,4rpm round shaft

250Nm/ 4,4 U round shaft



LOCK EWA 12 1505 (6130)

SKU:6130

Variations

Type

150Nm/ 4,4 rpm round shaft

150Nm/ 4,4rpm hexagonal shaft



NUT COUPLING 1" (6088/ 6089)

SKU:6088/ 6089

Variations

Type

for motor with round shaft

for motor with hexagonal shaft



NUT COUPLING 1" (6089)

SKU:6089

with 2 screws / hexagonal



CHAIN COUPLING SET (6090/ 6091/ 6093)

SKU:6090/ 6091/ 6093



SET OF MOUNTING BRACKET (3457)

SKU:3457

for EWA 10/ 12/ 14 drives

Variations

Type
hexagonal / for tube 1"+ 2"
hexagonal / tube 1,5"
1" to screw / motor with round shaft

WIRES & CABLES



CLAMPING BLOCK, DIFFERENT TYPES (5600/ 5601)

SKU:5600/ 5601

Variations

Type

for wire and profile, flat

for wire and Ø19mm tube (with 2 turned-up edges)



CABLE DRUM 2" SEPARABLE (5207)

SKU:5207



CABLE PULLEY WITH CLAMP (4990)

SKU:4990

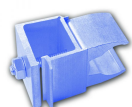
for 1-5mm wire



BUSHING JOINT, SEPARABLE (4425)

SKU:4425

in plastic, für old systems



COUPLING PIECE FOR WIRE DRIVEN SYSTEMS (5605)

SKU:5605

complete SET
(consisting of clamping block, art.
5600/ 5601
+ clamp for Ø19mm tube, art. 3010)



DOUBLE AWING PULLEY (5297)

SKU:5297

Ø100mm PRO for beam 50x30mm



RETURN PULLEY WITH SUPPORTING BEAM (5295/ 5295-30)

SKU:5295/ 5295-30

Variations

Typ

Ø100mm for beam 50x50mm mounting
from the back



SUPPORTING BEAM WITH PULLEY (5291/ 5292)

SKU:5291/ 5292

Variations

Type

Ø100mm

PRO (reinforced pulley) Ø100mm

Typ

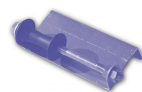
Ø100mm for beam 50x30mm mounting
from the back



PLASTIC ROLL (5211)

SKU:5211

for glide-off tin plate, art. 5289



GLIDE-OFF TIN PLATE (5289)

SKU:5289

for pulling wires



TWO HALF-SHELLS, PLASTIC (5209-1)

SKU:5209-1

for cable drum art. 5209



CABLE DRUM 2" (5209)

SKU:5209

incl. 3 bolts M8x12



CABLE DRUM WITH HOSE CLAMP (5204)

SKU:5204

1", with bolt and nut



CABLE DRUM, SPECIAL 1,5" (5200-15)

SKU:5200-15

4m, one-piece, glued, plastic



CABLE DRUM 1" (5200/ 5200-15/ 5202/ 5203)

SKU:5200/ 5200-15/ 5202/ 5203

Variations

Type

4m, single piece, plastic

special 1.5" 4m, single piece, glued

4m, separable, plastic

6m, separable, plastic



WIRE GUIDE, STAINLESS STEEL (3691/ 3692)

SKU:3691/ 3692

for tube Ø19mm

Variations

Type

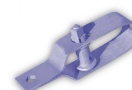
short (13mm)

long (38mm)



MAXI-WIRE TENSIONER (4998/ 4999)

SKU:4998/ 4999



WIRE TENSIONER (4991/ 4992)

SKU:4991/ 4992

Variations

Tipo

115mm

120mm



CABLE FIXING CLAMP (4988/ 4989)

SKU:4988/ 4989

Variations

Typ

1-5mm, ultimate load 1250kg

1-5mm, ultimate load 500kg



WIRE TENSIONER WITH FLAT FRONT EDGE (4981/ 4984)

SKU:4981/ 4984

Variations

Type

1.8-3.0mm / max 400 kg

3.0-4.2mm / max 600kg



BRACKET 50X50M, STAINLESS STEEL (4820)

SKU:4820

for polyester wire, 5mm



STRETCHING WIRE HOLDER, OPEN (4814)

SKU:4814

Multi 50x50 / 50x30mm

Variations

Type

85mm

100mm



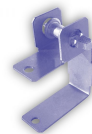
WIRE TENSIONER WITH TWIN MOUNTING (4982)

SKU:4982

for Ø2.00 to 3.25mm wire
max 400kg

TENSIONING DEVICE (4980)

SKU:4980

for wire tensioner Art. 4981-4985
(0-400KG)

TUBE CLAMP FOR TUBE 50X50MM (4815/ 4818)

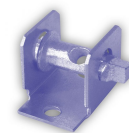
SKU:4815/ 4818

Variations

Type

with compact wire tensioner

metal



COMPACT WIRE TENSIONER (4810)

SKU:4810



WIRE SCISSORS (8330)

SKU:8330

Variations



ATLAS WIRE, TRANSPARENT (4030/ 4033)

SKU:4030/ 4033

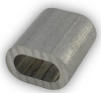
Ring ca. 11Kg/ ca. 2.970m (=ca. 270m/
kg)

Variations

Typ

2mm, Ring of ca. 11Kg/ ca. 2.970m (ca.
270m/kg)

3mm, Ring of ca. 11Kg/ ca. 1320m (=ca.
120m/ kg)



PRESS SLIDE, OVAL (4503/ 4513)

SKU:4503/ 4513

Aluminium

Variations

Type

oval

round



CABLE CLAMP, OVAL (4412/ 4413/ 4414)

SKU:4412/ 4413/ 4414

Variations

Type

Size 2

Size 3

Size 4



SPECIAL WIRE, PP-COATED (4070)

SKU:4070

2 to 3mm, 1000m roll



CABLE CLAMP (4401/ 4402)

SKU:4401/ 4402

galvanized / cast iron

Variations

Type

Any Typ

Any Typ



WIRE, STAINLESS STEEL (4080/ 4081)

SKU:4080/ 4081

Variations

Typ

3mm, 7x7

3mm, 6x19+1 (special)



WIRE, STAINLESS STEEL (4056/ 4080/ 4081)

SKU:4056/ 4080/ 4081

Roll ca.1000m

Variations

Type

6x7, 3mm

7x7, 3mm

6x19+1 special, 3mm



VICTOR CHAIN (4006)

SKU:4006

ca. 2.5mm (1 pack. = 30m)



POLYESTER WIRE (4040/4041)

SKU:4040/4041

Roll of 1800m

Variations

Type

Any Typ

Any Typ



WIRE, STAINLESS STEEL (4020/ 4023/ 4024)

SKU:4020/ 4023/ 4024

without unwinding station

Variations

Type

2mm, Type 1.4301, Ring of ca. 35 kg=1400m

3mm, Type 1.4301 special thickness, ring of ca. 1kg= 17m

4mm, Type 1.4301 special thickness, ca. 1kg= 10m



POLYESTER ROPE (4012/ 4013)

SKU:4012/ 4013

Roll of 500m (white/ blue)

Variations

Type

Any Typ

Any Typ



**POLYESTER ROPE, 4MM
(4014)**

SKU:4014

Roll of 500m



**SOLID STAINLESS STEEL
WIRE (4020)**

SKU:4020

2mm, type 1.4301 (without unwinding station)

Ring of approx. 35kg = 1400m
alternatively on large coils of approx.
250kg

ROLLING SCREEN SYSTEMS



FIXED-BACK CHANNEL RAIL (3630)

SKU:3630

for Ø6mm cord, AL 6.40m



END PIECE FOR ROLL UP TUBE, BALL BEARING MOUNTED (3291)

SKU:3291

Aluminium



PROFILE SHAFT Ø175MM (3275)

SKU:3275

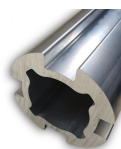
Standard length: 640cm
other lengths upon request



CONNECTOR FOR ROUND SHAFT ON DOUBLE DUO ULTRA (3272)

SKU:3272

for LOCK round shaft



CONNECTOR FOR Ø100MM ROLL UP TUBES (3265-20)

SKU:3265-20

20cm long & adapter for Ø50mm tube



TUBE FOR ROLLING SYSTEM "DOUBLE DUO" (3269/ 3670)

SKU:3269/ 3670

Variations

Typ

Ø100mm, 640cm

Ø100mm Ultra, 640cm



TUBE CONNECTOR (3257/ 3266)

SKU:3257/ 3266

Variations

Typ

double groove for Ø50mm tube

double groove for Ø63mm tube



ROLL UP TUBE, DOUBLE GROOVE (3252/ 3261)

SKU:3252/ 3261

Variations

Type

Ø50mm, 640cm

Ø63mm, 640cm



ROLLING SCREEN GUIDE (3228/ 3231)

SKU:3228/ 3231

Variations

Typ

for Ø27mm tube, with stainless bracket

for Ø27mm tube, for twin-screens



CABLE CHAIN BRACKET (3223)

SKU:3223

90 degrees, for rolling system



ROLL SCREEN SLIDER, STAINLESS STEEL (3221)

SKU:3221

for rail Art. 3220

Variations

Typ

short, with 10mm flange for Nova50 tube motor

long, with 10mm flange for Nova50 tube motor



GUIDE BAR, DIFFERENT LENGTHS (3220)

SKU:3220

for Art. 3221

Variations

Typ

250cm

400cm

500cm

600cm



PURLIN CLIP FOR ROLL SCREEN (3216)

SKU:3216

TECHNICAL PARTS



RIGID CONNECTOR, STEEL, FOR Ø19MM TUBE (N/A)

SKU:N/A



CLAMPING BLOCK, DIFFERENT TYPES (5600/ 5601)

SKU:5600/ 5601

Variations

Type
for wire and profile, flat
for wire and Ø19mm tube (with 2 turned-up edges)



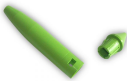
CABLE DRUM 2'' SEPARABLE (5207)

SKU:5207



S-HOOK GALVANISED (5003)

SKU:5003



BUSHING JOINT, SEPARABLE (4425)

SKU:4425

in plastic, für old systems



HS² SUPPORT BRACKET FOR TRUSS (3686)

SKU:3686

in plastic, single piece, without self-drilling screw (art. 8630)

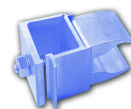


SUSPENSION CLAMP (5718/ 5719)

SKU:5718/ 5719

Variations

Type
with 3 holes
special 8-14mm



COUPLING PIECE FOR WIRE DRIVEN SYSTEMS (5605)

SKU:5605

complete SET
(consisting of clamping block, art.
5600/ 5601
+ clamp for Ø19mm tube, art. 3010)

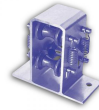


SLIDING CLUTCH (5550/ 5555)

SKU:5550/ 5555

Variations

Typ



DELAY ELEMENTS (5520/ 5530/ 5532/ 5540)

SKU:5520/ 5530/ 5532/ 5540

Variations

Type

for push-pull-systems

for profile and wire system

with Ø19mm tube clamp

Ultra Delay (Ø19mm & profile)



HOSE CLAMP, METAL (5518/ 5519)

SKU:5518/ 5519

Variations

Typ

for Ø19mm tube

for Ø32mm tube



SLIDING CLAMP, LARGE (5517)

SKU:5517

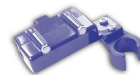
black, plastic



CROSS-TYPE CLAMP, SMALL (5516)

SKU:5516

plastic, black



DELAY ELEMENT, PLASTIC (5510/ 5511)

SKU:5510/ 5511

Variations

Typ

D for hanging system

NL for laying system



SET OF WEIGHTS FOR CLOTH (5495)

SKU:5495

SET consisting of 2 weights and 1 pin



CLAMP, STAINLESS STEEL (5415)

SKU:5415



CLOTH PEG (5400/ 5405)

SKU:5400/ 5405

Variations

Type

plastic

stainless steel



SUPPORT ELEMENT (5355)

SKU:5355

for Ø19mm tube



SUSPENSION HOLDER, PLASTIC (5335)

SKU:5335

for Ø19mm tube, black
also available in WHITE, art. 5335-2



TUBE CLAMP, PLASTIC, DIFFERENT TYPES (5320/ 5331/ 5332/ 5333/ 5334)

SKU:5320/ 5331/ 5332/ 5333/ 5334

Variations

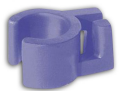
Type

with arm

with 2 fixing screws

with 1 fixing screw

small, with 1 fixing screw



SCREEN CLIP WITH WIRE SUPPORT (5300)

SKU:5300



DOUBLE AWING PULLEY (5297)

SKU:5297

Ø100mm PRO for beam 50x30mm



RETURN PULLEY WITH SUPPORTING BEAM (5295/ 5295-30)

SKU:5295/ 5295-30

Variations

Typ

Ø100mm for beam 50x50mm mounting
from the back

Ø100mm for beam 50x30mm mounting
from the back



SUPPORTING BEAM WITH PULLEY (5291/ 5292)

SKU:5291/ 5292

Variations

Type

Ø100mm

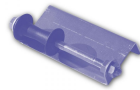
PRO (reinforced pulley) Ø100mm



PLASTIC ROLL (5211)

SKU:5211

for glide-off tin plate, art. 5289



GLIDE-OFF TIN PLATE (5289)

SKU:5289

for pulling wires



BALL BEARING FOR BEARING PLATE (5281-1)

SKU:5281-1

for 1"/2" shaft, short



BEARING PLATE, SQUARE (5281/ 5282/ 5283/ 5285)

SKU:5281/ 5282/ 5283/ 5285

Variations

Typ

for 1" shaft short

for 1" shaft long

for 2" shaft short

with flange



BALL BEARING WITH FIXING SCREW (5279)

SKU:5279



BALL BEARING WITHOUT FIXING SCREW (5278)

SKU:5278



BEARING HOUSING (5276)

SKU:5276

(single)



BEARING HOUSING SET (5276+5278/ 5276+5279)

SKU:5276+5278/ 5276+5279

Variations

Type

with ball bearing without fixing screw

with ball bearing and fixing screw



BEARING 1", PLASTIC (5270)

SKU:5270

1" for square tube (50x50mm)



BEARING PLATE, ROUND (5272/ 5273/ 5274/ 5274-42)

SKU:5272/ 5273/ 5274/ 5274-42



CARDAN SHAFT (5260-0/ 5261/ 5265/ 5266)

SKU:5260-0/ 5261/ 5265/ 5266

Variations

Type

1" with adaptor end 26,7mm (twisted version)

1" with adaptor end 26,7mm (new)

1,5" with adaptor end 41mm and Ø10mm hole



SWIVEL PULLEY (5243/ 5244/ 5245/ 5246/ 5247)

SKU:5243/ 5244/ 5245/ 5246/ 5247

Variations

Typ

without ball bearing, 2 holes

without ball bearing, 1 hole

double with ball bearing, 2 holes

double without ball bearing, 2 holes

simple, with ball bearing, 2 holes



AWING PULLEY (5241/ 5242)

SKU:5241/ 5242

Variations



SEALING BRACKET, PLASTIC (5253)

SKU:5253

2mm, reinforced



AWING PULLEY PRO FOR ULTRAFIX-PLATE (5233)

SKU:5233

Ø100mm



AWING PULLEY WITH SPECIAL PLASTIC BRACKET (5240)

SKU:5240

50 x 50mm

Variations

Type

for 1" shaft, cast-iron housing

for 1,5" shaft, cast-iron housing

for 2" shaft, cast-iron housing

for 42m shaft, cast-iron housing

Type

simple

open



BRACKET FOR AWING PULLEY (5232-1/ 5235-1)

SKU:5232-1/ 5235-1

Variations

Typ

galvanised steel, for PRO awing pulley
--

galvanised steel, for Ø100mm awing pulley



AWING PULLEY WITHOUT BRACKET (5220/ 5221/ 5230-2/ 5231)

SKU:5220/ 5221/ 5230-2/ 5231

Variations

Type

Ø80mm

Ø80mm PRO (reinforced)

Ø100mm reinforced, thin

Ø100mm PRO



DIABOLO WHEEL, PLASTIC (5210/ 5212/ 5213)

SKU:5210/ 5212/ 5213

Variations

Typ

large M8

small M6 for Ø27mm tube



AWING PULLEY WITH BRACKET, DIFFERENT TYPES (5224/ 5225/ 5225-AS/ 5232/ 5235)

SKU:5224/ 5225/ 5225-AS/ 5232/ 5235

Variations

Type

Ø100mm for Ultrafix-Plate

Ø80mm PRO

Ø80mm

Ø100mm PRO

Ø100mm



AWING PULLEY Ø52MM (5215)

SKU:5215

Plastic, Ø8mm drilling



TWO HALF-SHELLS, PLASTIC (5209-1)

SKU:5209-1

for cable drum art. 5209

Typ

small for Ø32mm tube



CABLE DRUM 2" (5209)

SKU:5209

incl. 3 bolts M8x12



CABLE DRUM WITH HOSE CLAMP (5204)

SKU:5204

1", with bolt and nut



CABLE DRUM, SPECIAL 1,5" (5200-15)

SKU:5200-15

4m, one-piece, glued, plastic



CABLE DRUM 1" (5200/5200-15/ 5202/ 5203)

SKU:5200/ 5200-15/ 5202/ 5203

Variations

Type

4m, single piece, plastic

special 1.5" 4m, single piece, glued

4m, separable, plastic

6m, separable, plastic



TRIPLE HOOK (SET OF THREE PIECES) (5151)

SKU:5151

Hook / big element / small element



MD CLIP (5140)

SKU:5140

Plastic



SCREEN FOLDER, DIFFERENT TYPES (5010/ 5131/ 5135/ 5136)

SKU:5010/ 5131/ 5135/ 5136



SCREEN HOOK, EGG SHAPE (5120)

SKU:5120

in plastic

Variations

Type

simple, stainless steel

irregular legs, stainless steel

double legs, plastic



CLIP FOR TUBE (5117/ 5119)

SKU:5117/ 5119

for Ø19mm tube

Variations

Typ
stainless steel
plastic



TRUSS CLIP, STAINLESS STEEL (5020- 5060)

SKU:5020- 5060

Variations

Typ
20mm
25mm
30mm
35mm
40mm
45mm
50mm
60mm



SCREEN GUIDE, STAINLESS STEEL (5010)

SKU:5010



OUTDOOR HOOK (5006)

SKU:5006

Plastic, black



S-HOOK (SCREEN HOOK), PLASTIC (5000/ 5001-1/ 5001-2)

SKU:5000/ 5001-1/ 5001-2

Variations

Typ
standard
'PRO' (with anti-slip feature) black
'PRO' (with anti-slip feature) white



SNAP HOOK (4420/ 4421)

SKU:4420/ 4421

Variations

Type
light (screw closure 4mm)
heavy (stainless steel)



TUBE HOLDER, ALUMINIUM (3827/ 3832)

SKU:3827/ 3832

Variations



ALUMINIUM CLAMP (3727/ 3732)

SKU:3727/ 3732

Variations

Typ
Ø27mm
Ø32mm



WIRE GUIDE FOR PROFILE, PLASTIC (3697)

SKU:3697

only indoor use

Type
for Ø27mm tube
for Ø32mm tube



WIRE GUIDE FOR PROFILE, STAINLESS STEEL (3695)

SKU:3695

for Uni-profile



WIRE GUIDE, PLASTIC (3694)

SKU:3694

for profile (top)



WIRE GUIDE, STAINLESS STEEL (3691/ 3692)

SKU:3691/ 3692

for tube Ø19mm

Variations

Type
short (13mm)
long (38mm)



TABLE CLAMP (3591/ 3626/ 3628)

SKU:3591/ 3626/ 3628

Variations

Type
HD for Ø32mm tube with nuts and bolts
for Ø27mm tube/ 60mm high
for Ø32mm tube/ 60mm high



HANGING PLATE (WITH HOLES) (3520)

SKU:3520

148 x 40 x 3mm



DIABOLO WHEEL WITH BRACKET (3485)

SKU:3485



NUT M6, STAINLESS STEEL (3026)

SKU:3026



HAMMERHEAD BOLT M6, STAINLESS STEEL (3025)

SKU:3025

Variations

Typ

M6 x 16mm without nut

M6 x 27mm without nut

M6 x 30mm without nut



HAMMERHEAD BOLT, GALVANISED (3015-25/ 3015-30)

SKU:3015-25/ 3015-30

Variations

Typ

M6 x 25mm with nut

M6 x 30mm with nut

M6 x 30mm without nut



CLAMP (3010)

SKU:3010

for Ø19mm tube



WIRE TENSIONER (4991/ 4992)

SKU:4991/ 4992

Variations

Type

85mm



NUT M6 (3016)

SKU:3016

for hammerhead bolt art. 3014/ 3015



HAMMERHEAD BOLT, GALVANISED (3014/ 3015)

SKU:3014/ 3015

Variations

Type

M6 x 40mm

M6 x 75mm



MAXI-WIRE TENSIONER (4998/ 4999)

SKU:4998/ 4999

Variations

Tipo

115mm

120mm



CABLE FIXING CLAMP (4988/ 4989)

SKU:4988/ 4989

Variations

Typ

1-5mm, ultimate load 1250kg

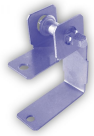
Type

100mm



WIRE TENSIONER WITH TWIN MOUNTING (4982)

SKU:4982

for Ø2.00 to 3.25mm wire
max 400kg

TUBE CLAMP FOR TUBE 50X50MM (4815/ 4818)

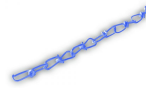
SKU:4815/ 4818

Variations

Type

with compact wire tensioner

metal



VICTOR CHAIN (4006)

SKU:4006

ca. 2.5mm (1 pack. = 30m)

Typ

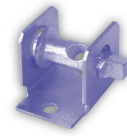
1-5mm, ultimate load 500kg



BRACKET 50X50M, STAINLESS STEEL (4820)

SKU:4820

for polyester wire, 5mm



COMPACT WIRE TENSIONER (4810)

SKU:4810

TUBES AND PROFILES



PVC TUBE (3500)

SKU:3500

several lengths available (3.05m / 3.20m / 4.00m / 4.5m / 5.00m)
Ø10mm - white



RIGID CONNECTOR, STEEL, FOR Ø19MM TUBE (N/A)

SKU:N/A



APS DUO HD PROFILE (3625)

SKU:3625

in aluminium
6.4m long



HS² TRUSS COVERING PROFILE (3717)

SKU:3717

in Aluminium
Length: 6.40m
Width: 80mm



BLACK SEALING RUBBER FOR SCREEN PROFILE (3698/ 3699)

SKU:3698/ 3699



COUPLING PIECE FOR SCREEN PROFILE (3689/ 3690)

SKU:3689/ 3690

Variations

Type

200m per box / large, 100m per box

schwarz, BREIT, Pck a 100m

Variations

Type

in AL, straight

in AL, bent



SCREW FOR SUPPORT BRACKET (ART. 3685) (3685-1)

SKU:3685-1

M6x12, stainless steel



SUSPENSION BRACKET FOR APS2 AND APS DUO PROFILES (3685)

SKU:3685

in plastic, without screw (art.3685-1)



SIGMA-PROFILE (3650)

SKU:3650

AL-construction profile/ 6,4m



APS DUO NEO PROFILE (3641)

SKU:3641

40x40mm

Aluminium/ 6.40m



KEDERPLUS PROFILE (3639)

SKU:3639

Aluminium/ 6.40m



APS2 SCREEN PROFILE (3636)

SKU:3636

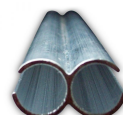
Aluminium/ 6.4m



FIXED-BACK CHANNEL RAIL (3630)

SKU:3630

for Ø6mm cord, AL 6.40m



APS CONNECT AL-PROFILE (3623)

SKU:3623

Length: 6.40m



SCREEN PROFILE APS QUATTRO (3620/ 3620-2)

SKU:3620/ 3620-2

Length: 6.4m



JANUS PROFILE (3619)

SKU:3619

In aluminium/ 6.4m long.
Only suitable for light-weight screens
and short distances between wires
and/or racks.

Variations

Type

in aluminium

in plastic



APS DUO SUPPORT PROFILE (3624)

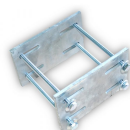
SKU:3624

in aluminium
6.4m long

HS² ISOLATING RUBBER (3570)

SKU:3570

für profile joints (art. 3624-3625)



MAXI CLAMP SET WITH LONG HOLES (3470)

SKU:3470

for 50/50mm tube
consisting of:
- clamp plates in galv. steel (2 pieces)
- M10 screws (4 pieces)



CLAMPING PLATE WITH LONG HOLES (3469)

SKU:3469

for art. 3470 (Maxi clamp set)
200x50x10mm

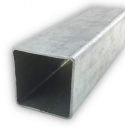


OMEGA SET (3452)

SKU:3452

consisting of:

- Omega coupling piece 50/50
- Support plate (103x160mm)
- Screw M8x160mm (4 units)



SQUARE TUBE 50X 50X 2MM (3450)

SKU:3450

6.4m, galvanised



CONNECTOR FOR SQUARE TUBE (ART. 3450) (3451)

SKU:3451

45x 45x 200mm



RUBBER STOPPER FOR Ø19MM TUBE (3294)

SKU:3294

45mm long



PIPE WRAP CONNECTOR FOR 1" TUBE (3445)

SKU:3445

incl. 4x M8x50mm



ELBOW JOINT FOR SQUARE TUBE (3449)

SKU:3449

50 x 50mm



TUBE JOINT (3191)

SKU:3191

rigid, for Ø19mm aluminium tube, in plastic



JOINT CONNECTOR, DIFFERENT TYPES (3190/ 3192/ 3195)

SKU:3190/ 3192/ 3195



ALUMINIUM TUBE (3119)

SKU:3119

Ø19mm x 1.0mm x 6.4m



DRIVE SHAFT (GALVANISED TUBE 2") (3047/ 3048)

SKU:3047/ 3048

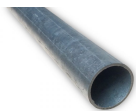
Variations

Type

riveted, for Ø19mm AL tube

SET of two pieces (P+P)

SET of two pieces (M+P)



DRIVE SHAFT TUBE (GALVANISED) (3045/ 3046)

SKU:3045/ 3046

Variations

Type

1" x 2,5mm x 6470mm, tapered,
screwable

5/4" x 2,5mm x 6470mm



CONNECTING BOLT AND NUT (3001/ 3002)

SKU:3001/ 3002

SET of two for tube \varnothing 27/32mm



DIABOLO WHEEL, PLASTIC (5210/ 5212/ 5213)

SKU:5210/ 5212/ 5213

Variations

Typ

large M8

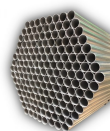
small M6 for \varnothing 27mm tube

small for \varnothing 32mm tube



ALUMINIUM CLAMP (3727/ 3732)

SKU:3727/ 3732



ROUND TUBE, GALVANIZED (3019/ 3027/ 3032)

SKU:3019/ 3027/ 3032

Variations

Type

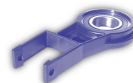
60.3mm x 3.65mm x 6.0m, tapered

60.3mm x 3.65mm x 6.0m, not tapered

\varnothing 19mm x 0.8mm x 6.47m + 7cm
tapered

\varnothing 27mm x 1.5mm x 6.40m + 7cm
tapered

\varnothing 32mm x 1.5mm x 6.40m + 7cm
tapered



BEARING 1", PLASTIC (5270)

SKU:5270

1" for square tube (50x50mm)



TUBE HOLDER, ALUMINIUM (3827/ 3832)

SKU:3827/ 3832

Variations

Typ

\varnothing 27mm

\varnothing 32mm



WIRE GUIDE FOR PROFILE, PLASTIC (3697)

SKU:3697

only indoor use

Variations

Type

for Ø27mm tube

for Ø32mm tube



WIRE GUIDE FOR PROFILE, STAINLESS STEEL (3695)

SKU:3695

for Uni-profile



WIRE GUIDE, PLASTIC (3694)

SKU:3694

for profile (top)



WIRE GUIDE, STAINLESS STEEL (3691/ 3692)

SKU:3691/ 3692

for tube Ø19mm



TABLE CLAMP (3591/ 3626/ 3628)

SKU:3591/ 3626/ 3628

Variations

Type

short (13mm)

long (38mm)



HAMMERHEAD BOLT, GALVANISED (3014/ 3015)

SKU:3014/ 3015

Variations

Type

M6 x 40mm

M6 x 75mm

Variations

Type

HD for Ø32mm tube with nuts and bolts

for Ø27mm tube/ 60mm high

for Ø32mm tube/ 60mm high

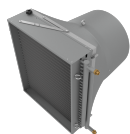


CLAMP (3010)

SKU:3010

for Ø19mm tube

OTHER ACCESSORIES



AIR HEATER (WITH WARM WATER) (8822)

SKU:8822



CARTRIDGE GUN (2295)

SKU:2295



SILICONE GLUE (2290)

SKU:2290



FIXING ELEMENTS, ROUND (2299)

SKU:2299

(see also art. 2290 silicone glue)
Note for fastening: min. 4 elements pro m² surface



HEXAGONAL DRILLING SCREW (8625/ 8630)

SKU:8625/ 8630



LED POWER SUPPLY UNIT (8569)

SKU:8569

12V 192W IP67

Variations

Type

with flange 4,2x 25mm for HS²-support bracket (Art. 3686)

with flange 6,3x 19mm



LED STRIP, COLD WHITE (8560)

SKU:8560

encapsulated, IP68 12V 5m (1pc/ roll)



STAPLES, STAINLESS STEEL (8415)

SKU:8415

24/6, 1000 pack



STAPLER, HEAVY-DUTY (8410)

SKU:8410

without staples (art. 8414)



BLADE FOR HEAT-CUTTER (8312 / 8313)

SKU:8312 / 8313

Variations



HEAT-CUTTER (8310)

SKU:8310

230V (without tip Art. 8312 / 8313)



BUSHING JOINT, SEPARABLE (4425)

SKU:4425

in plastic, für old systems



TENSIONING DEVICE (4980)

SKU:4980

for wire tensioner Art. 4981-4985
(0-400KG)



STRIP BRUSH (8100/ 8199)

SKU:8100/ 8199

Variations

Type

with horse hair and 25mm h-Aluminium profile, 3.0m long

with 100mm artificial bristles without profile, 2.0m long



SNAP HOOK (4420/ 4421)

SKU:4420/ 4421

Variations

Type

light (screw closure 4mm)

heavy (stainless steel)



WIRE SCISSORS (8330)

SKU:8330

Variations

HORTICULTURE SUPPLIES

LED LIGHTING



LED-PROFILE + DIFFUSOR (3644+ 3350)

SKU:3644+ 3350

Aluminium/ 6.4m

DEKO & EVENTS



HS TREVIRA CS ANTIFIRE SERIES (1110/ 1124/ 1125)

SKU:1110/ 1124/ 1125

Woven screen made of 100% PES
Fire retardant
Standard width: 3.50m for white / 2,15m for colour
Weight: ca. 150g/m²
Shading level: white ca. 52% / in colour ca. 65%
Energy saving: ca. 50-55%

Variations

Type
white
FLEXA, terracotta-white, thin stripes
FLEXA, terracotta-white, wide stripes



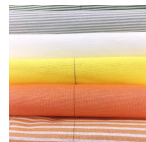
HS DEKOTEX - STAGE MOLTON (1910/ 1913/ 1915/ 1916/ 1914/ 1915)

SKU:1910/ 1913/ 1915/ 1916/ 1914/ 1915

Weight: 300gr/m²
Fire retardant in conformity with DIN4102B1
Non-washable

Variations

Type
blue
grey
green
night blue
red
black



HS MODACRYLICS SERIES (1150 / 1151)

SKU:1150 / 1151

Woven screen of modified acrylics (modacrylics)
Fire retardant
Standard width: 3.50m / 4.30m
Weight: ca. 148g/m²
Shading level: white ca. 55% / in colour ca. 65%
Energy saving: ca. 50-55%

Variations

Type
white
grey-white 2:2



HS TREVIRA ANTIFIRE (1110/ 1124/ 1125)

SKU:1110/ 1124/ 1125

Woven screen 100% Polyester
Standard width: white 3.50m / in colour 2.15m
Weight: ca. 150g/m²
Shading: white ca. 52% / in colour ca. 65%
Energy saving: ca. 50-55%

Variations

Type
white, standard width: 3,55m
FLEXA thin stripes (terracotta-white) / standard width: 2,15m
FLEXA large stripes (terracotta-white) / standard width: 2.15m

